

# TDEM

Hits and Misses

# TDEM

## Hits and Misses

### Forward looking statements

This document contains statements that are, or may be deemed to be, “forward looking statements” which are prospective in nature. These forward looking statements may be identified by the use of forward looking terminology, or the negative thereof such as “outlook”, “plans”, “expects” or “does not expect”, “is expected”, “continues”, “assumes”, “is subject to”, “budget”, “scheduled”, “estimates”, “aims”, “forecasts”, “risks”, “intends”, “positioned”, “predicts”, “anticipates” or “does not anticipate”, or “believes”, or variations of such words or comparable terminology and phrases or statements that certain actions, events or results “may”, “could”, “should”, “shall”, “would”, “might” or “will” be taken, occur or be achieved. Such statements are qualified in their entirety by the inherent risks and uncertainties surrounding future expectations. Forward-looking statements are not based on historical facts, but rather on current predictions, expectations, beliefs, opinions, plans, objectives, goals, intentions and projections about future events, results of operations, prospects, financial condition and discussions of strategy.

By their nature, forward looking statements involve known and unknown risks and uncertainties, many of which are beyond Glencore’s control. Forward looking statements are not guarantees of future performance and may and often do differ materially from actual results. Important factors that could cause these uncertainties include, but are not limited to, those discussed in Glencore’s Annual Report 2016.

Neither Glencore nor any of its associates or directors, officers or advisers, provides any representation, assurance or guarantee that the occurrence of the events expressed or implied in any forward-looking statements in this document will actually occur. You are cautioned not to place undue reliance on these forward-looking statements which only speak as of the date of this document. Other than in accordance with its legal or regulatory obligations (including under the UK Listing Rules and the Disclosure and Transparency Rules of the Financial Conduct Authority and the Rules Governing the Listing of Securities on the Stock Exchange of Hong Kong Limited and the Listing Requirements of the Johannesburg Stock Exchange Limited), Glencore is not under any obligation and Glencore and its affiliates expressly disclaim any intention, obligation or undertaking to update or revise any forward looking statements, whether as a result of new information, future events or otherwise. This document shall not, under any circumstances, create any implication that there has been no change in the business or affairs of Glencore since the date of this document or that the information contained herein is correct as at any time subsequent to its date.

No statement in this document is intended as a profit forecast or a profit estimate and no statement in this document should be interpreted to mean that earnings per Glencore share for the current or future financial years would necessarily match or exceed the historical published earnings per Glencore share.

This document does not constitute or form part of any offer or invitation to sell or issue, or any solicitation of any offer to purchase or subscribe for any securities. The making of this document does not constitute a recommendation regarding any securities.

The companies in which Glencore plc directly and indirectly has an interest are separate and distinct legal entities. In this document, “Glencore”, “Glencore group” and “Group” are used for convenience only where references are made to Glencore plc and its subsidiaries in general. These collective expressions are used for ease of reference only and do not imply any other relationship between the companies. Likewise, the words “we”, “us” and “our” are also used to refer collectively to members of the Group or to those who work for them. These expressions are also used where no useful purpose is served by identifying the particular company or companies.

# TDEM

## Hits and Misses

1 Physical Properties

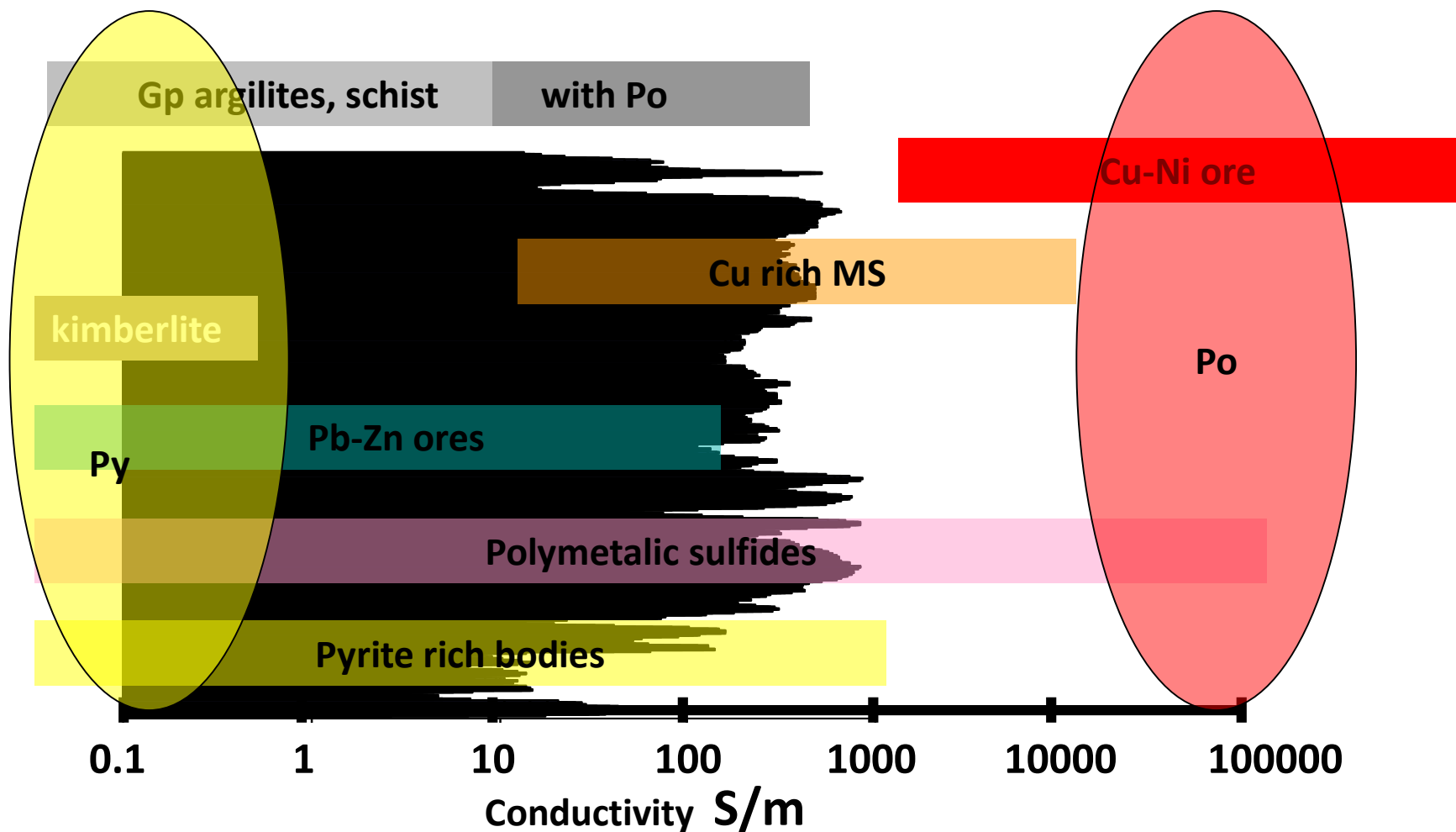
2 Airborne Surveys

3 Ground Surveys

4 Boreholes Surveys

5 Conclusions

# Physical Properties



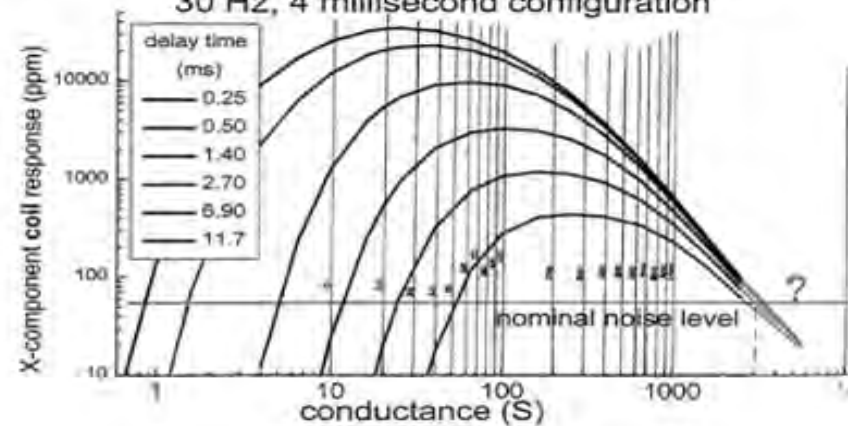


RAGLAN MINE



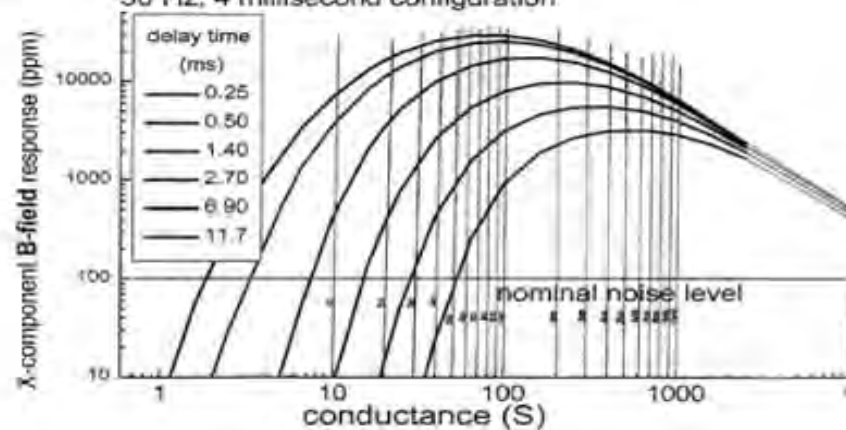
600 x 300 m vertical plate nomogram

30 Hz, 4 millisecond configuration

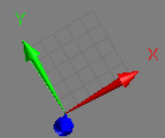
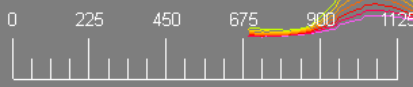
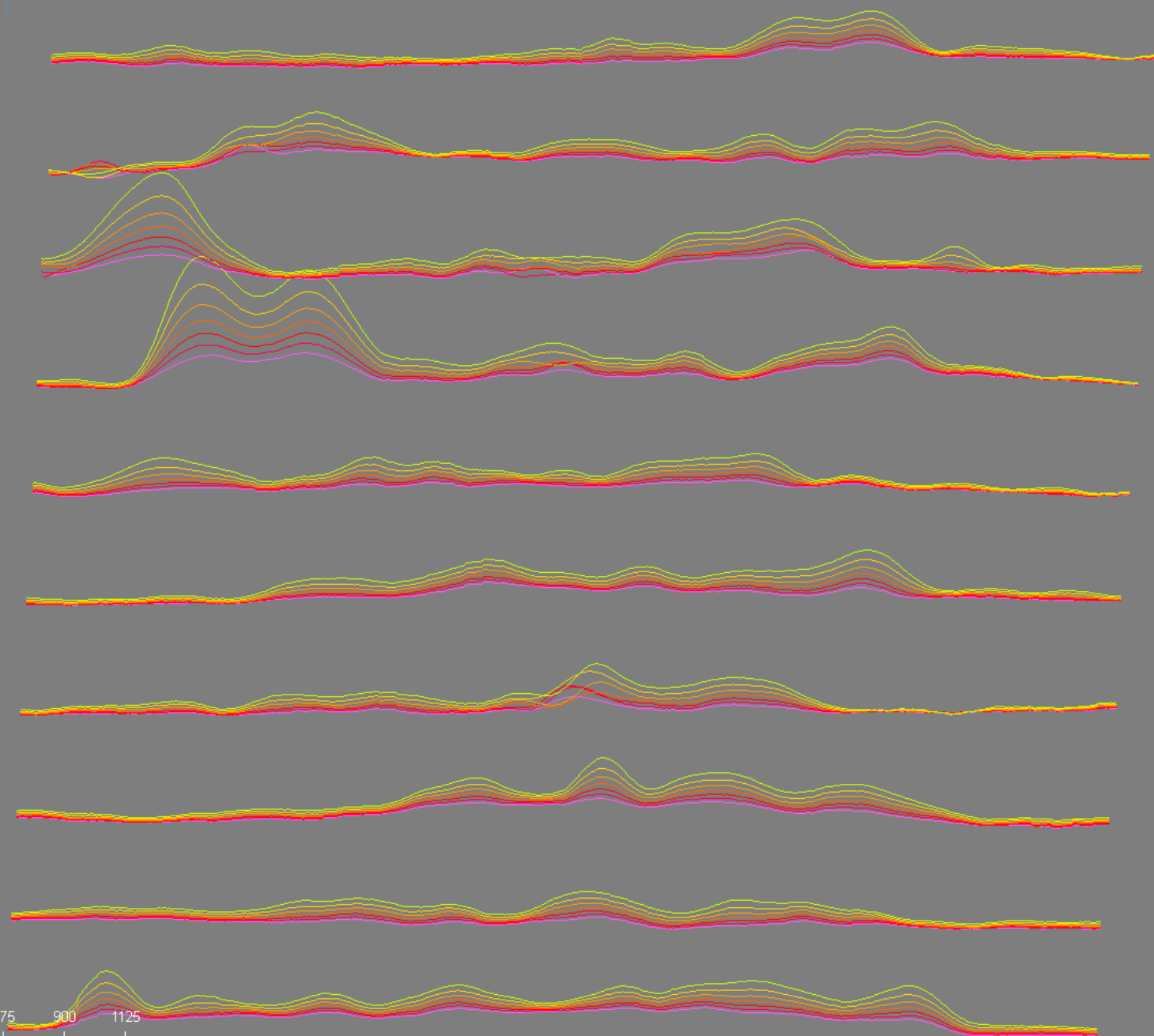


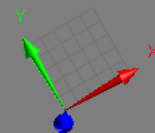
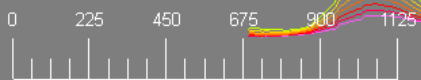
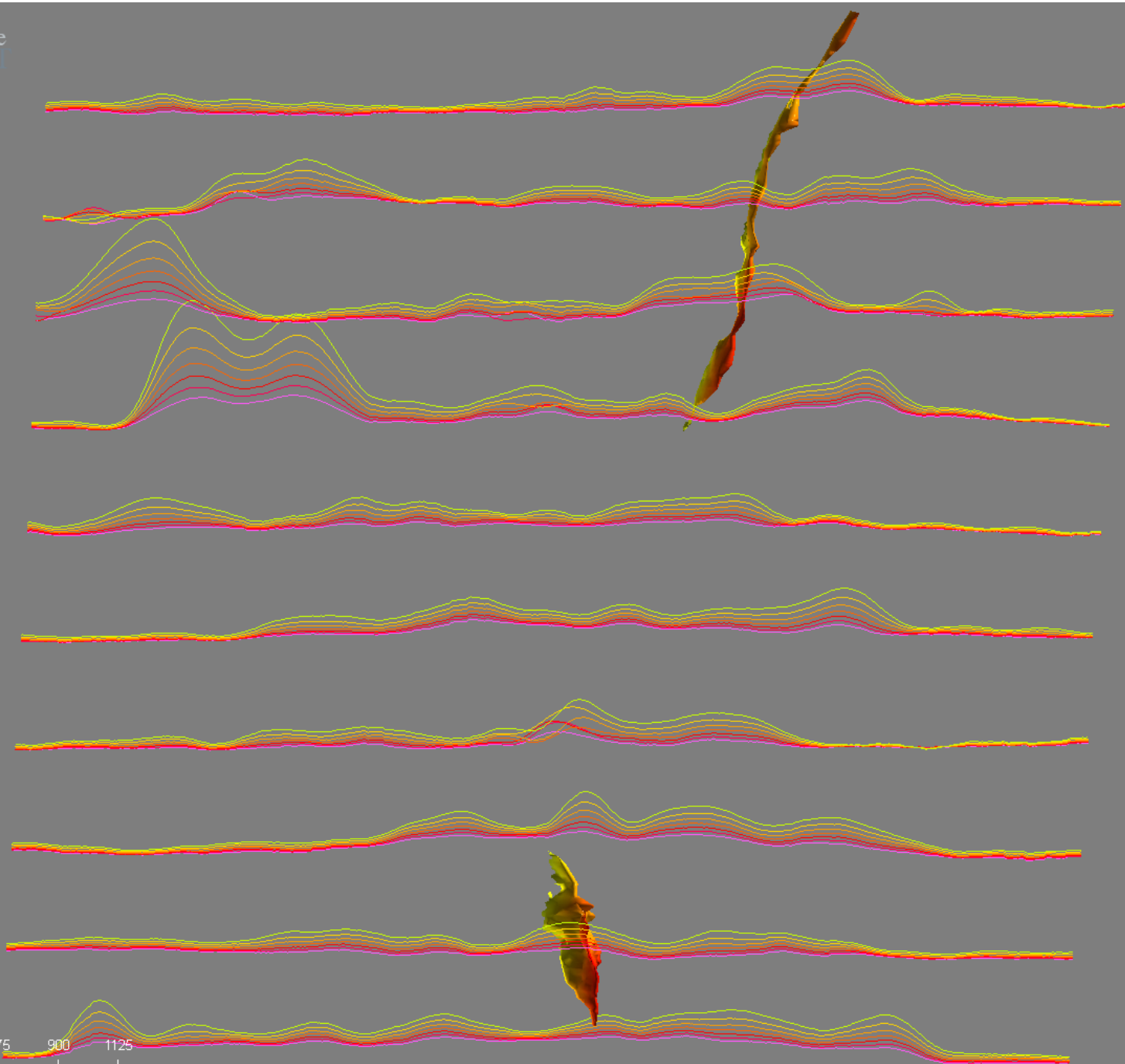
600 x 300 m vertical plate nomogram

30 Hz, 4 millisecond configuration



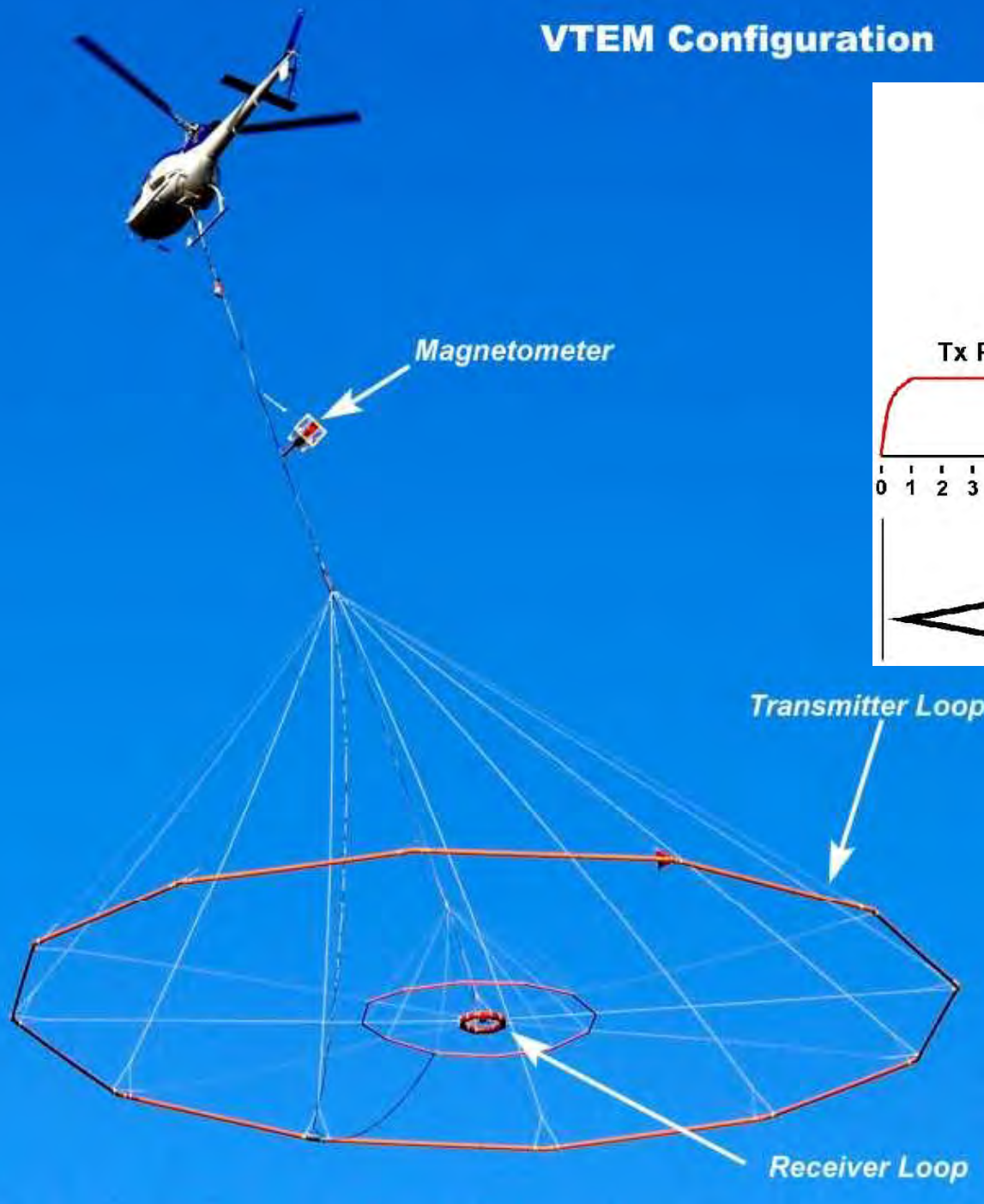
RAGLAN MINE



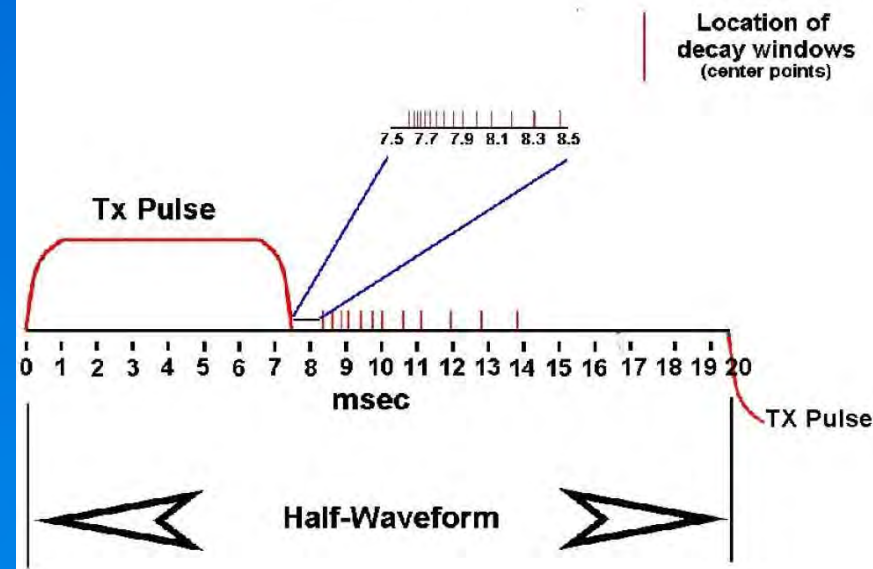




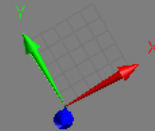
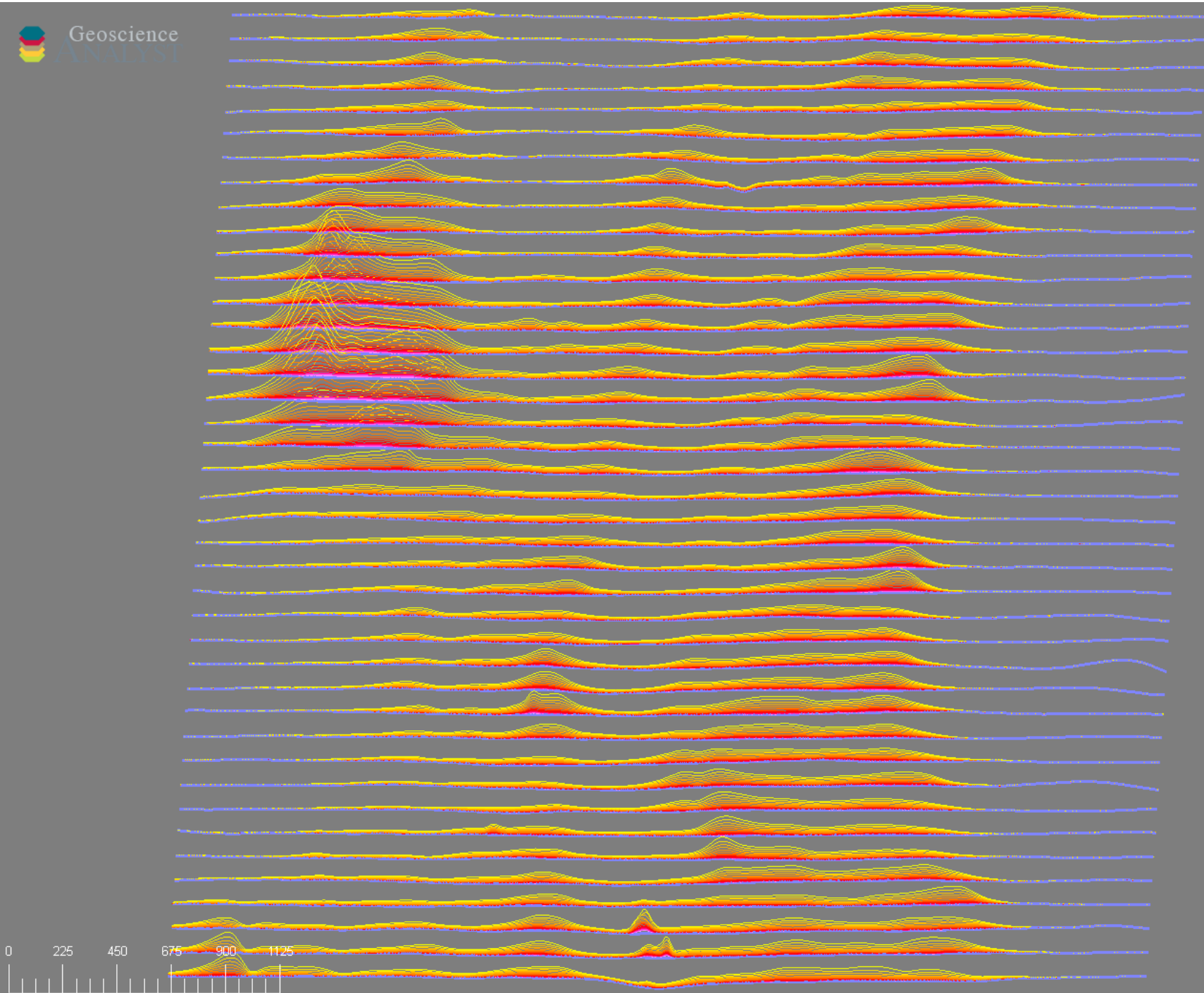
## VTEM Configuration

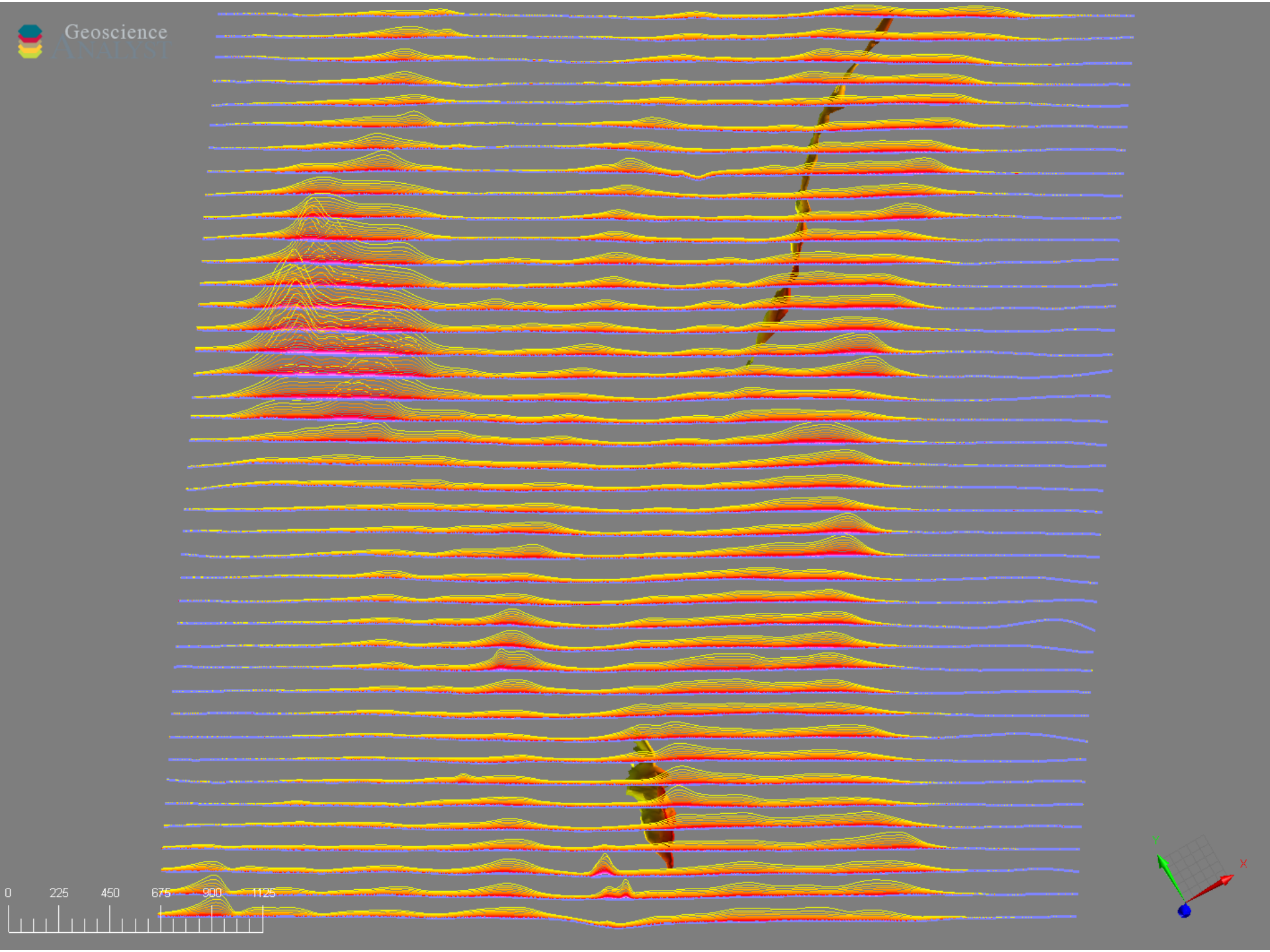


### VersaTEM 25 Hz Base Frequency Sample Times



RAGLAN MINE











UTEM ch1

Hx blue

Hz red

Crone S1

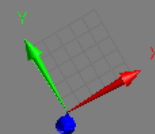
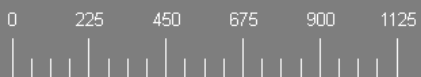
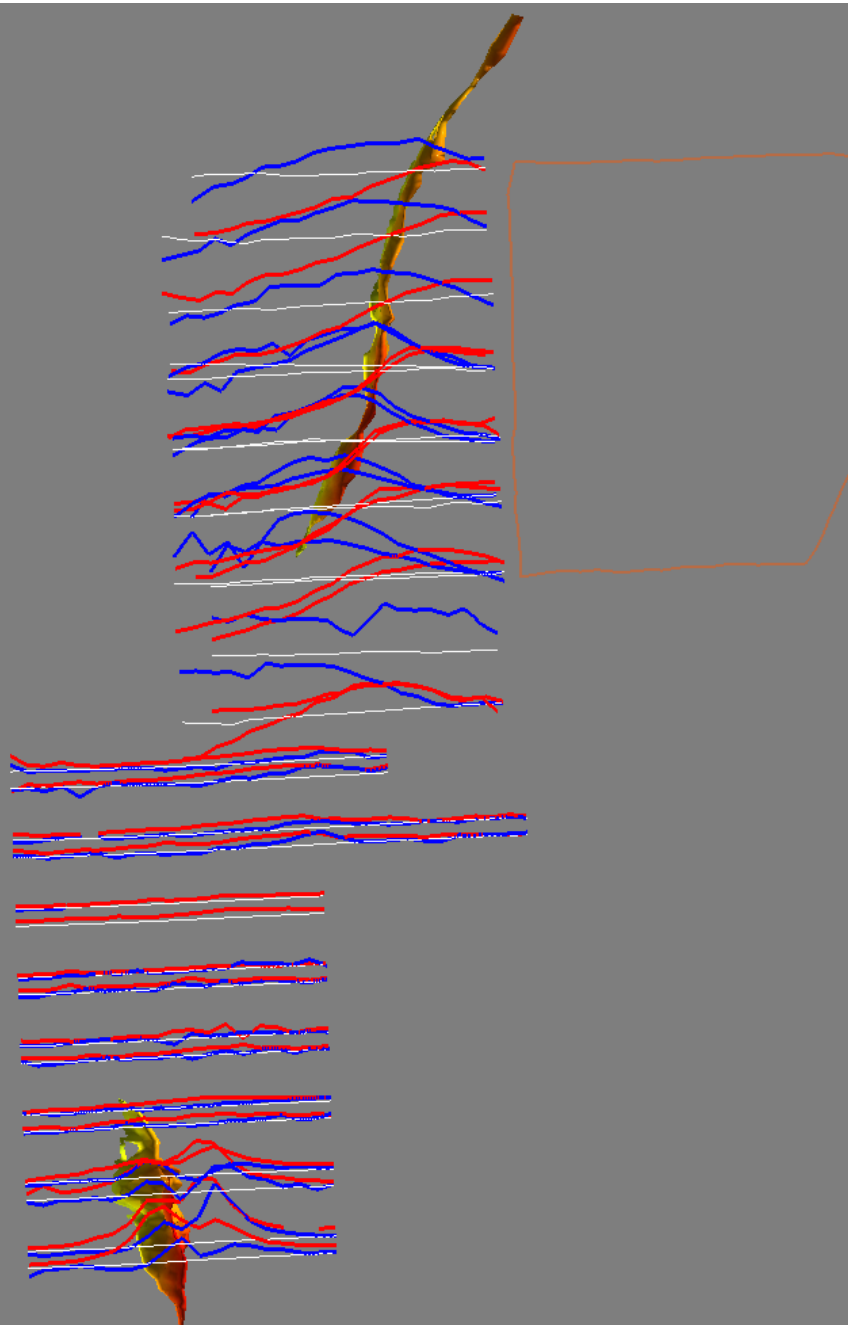
Hx blue

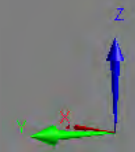
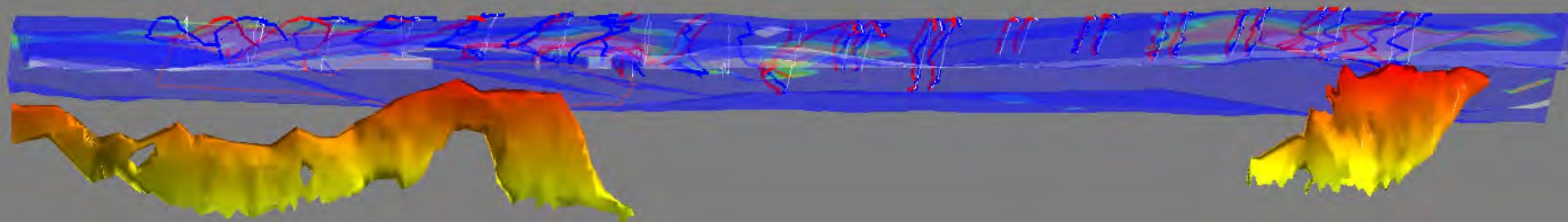
Hz red

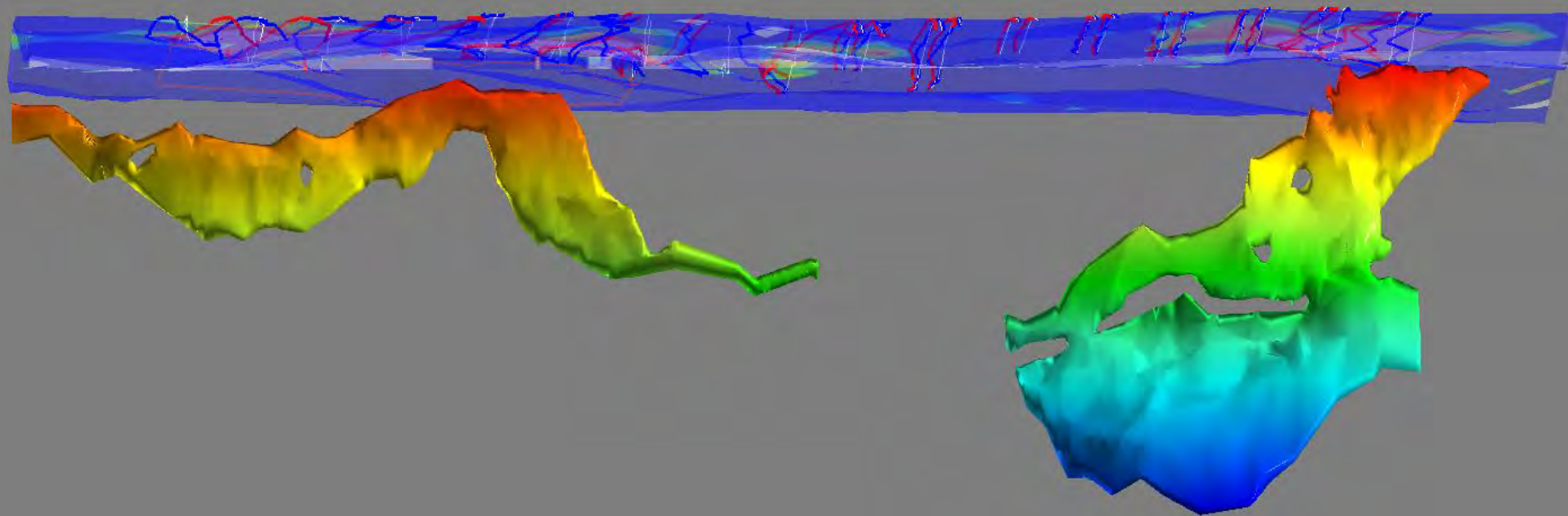
Squid

Hx blue

Hz red





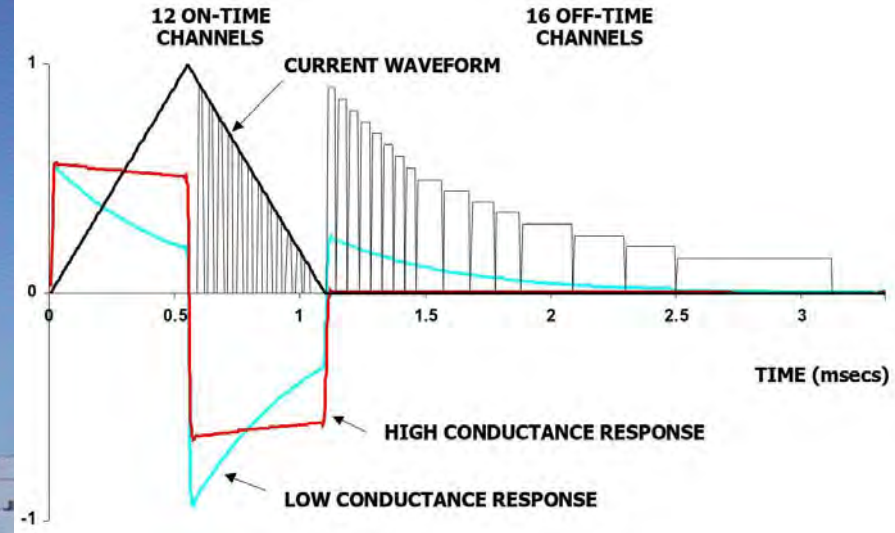
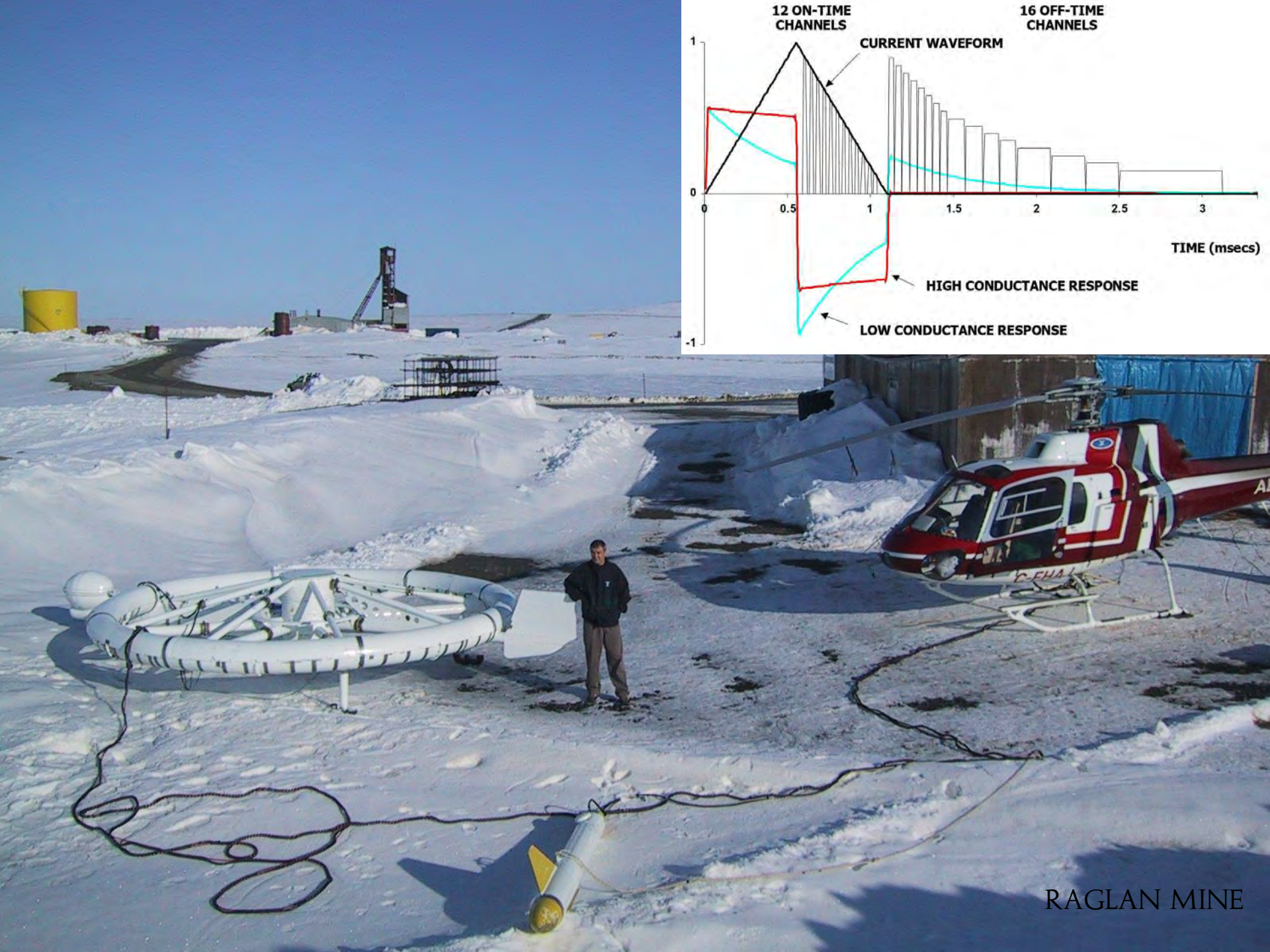






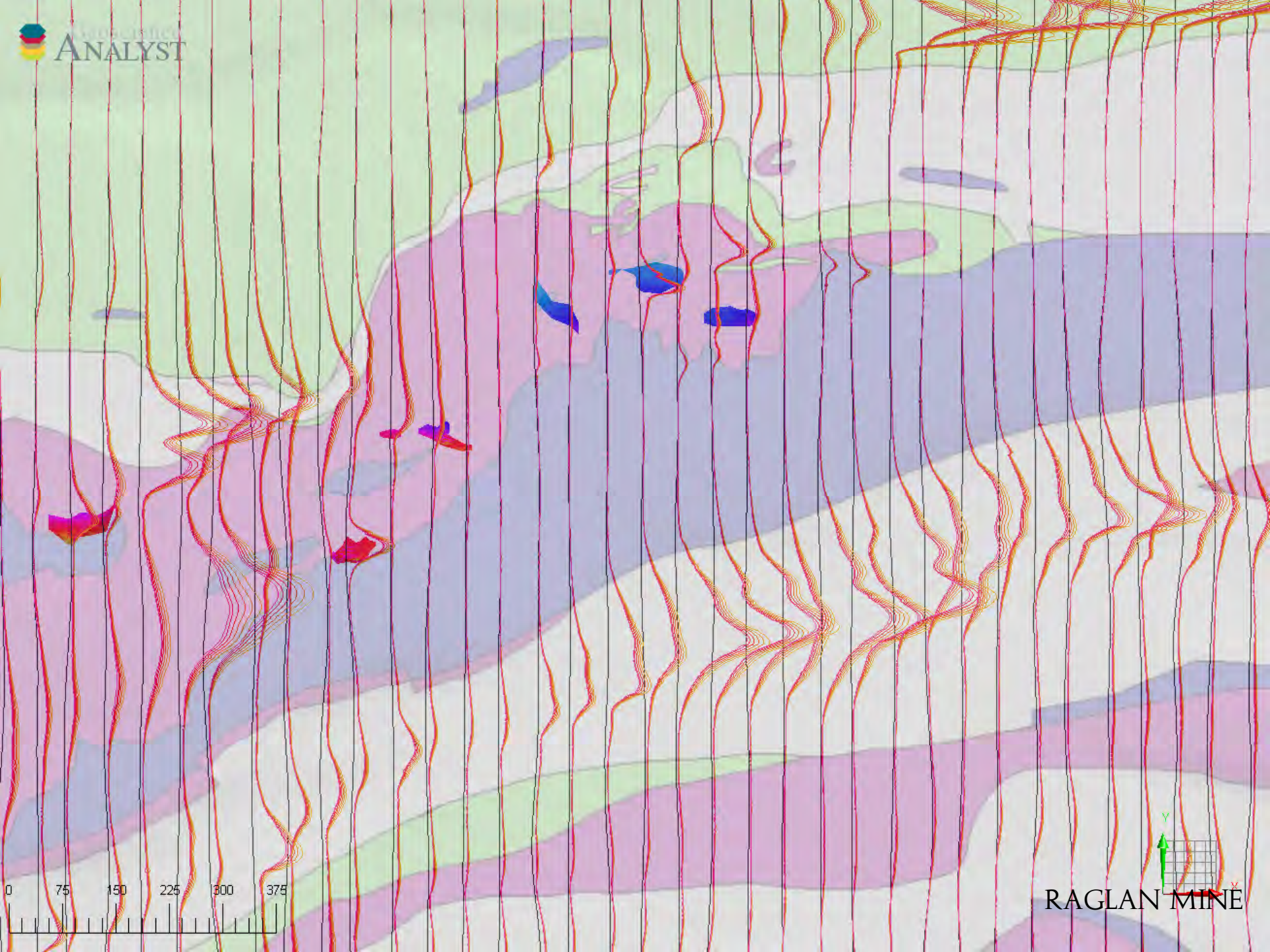
RAGLAN MINE





RAGLAN MINE







## Lamontagne BH UTEM4

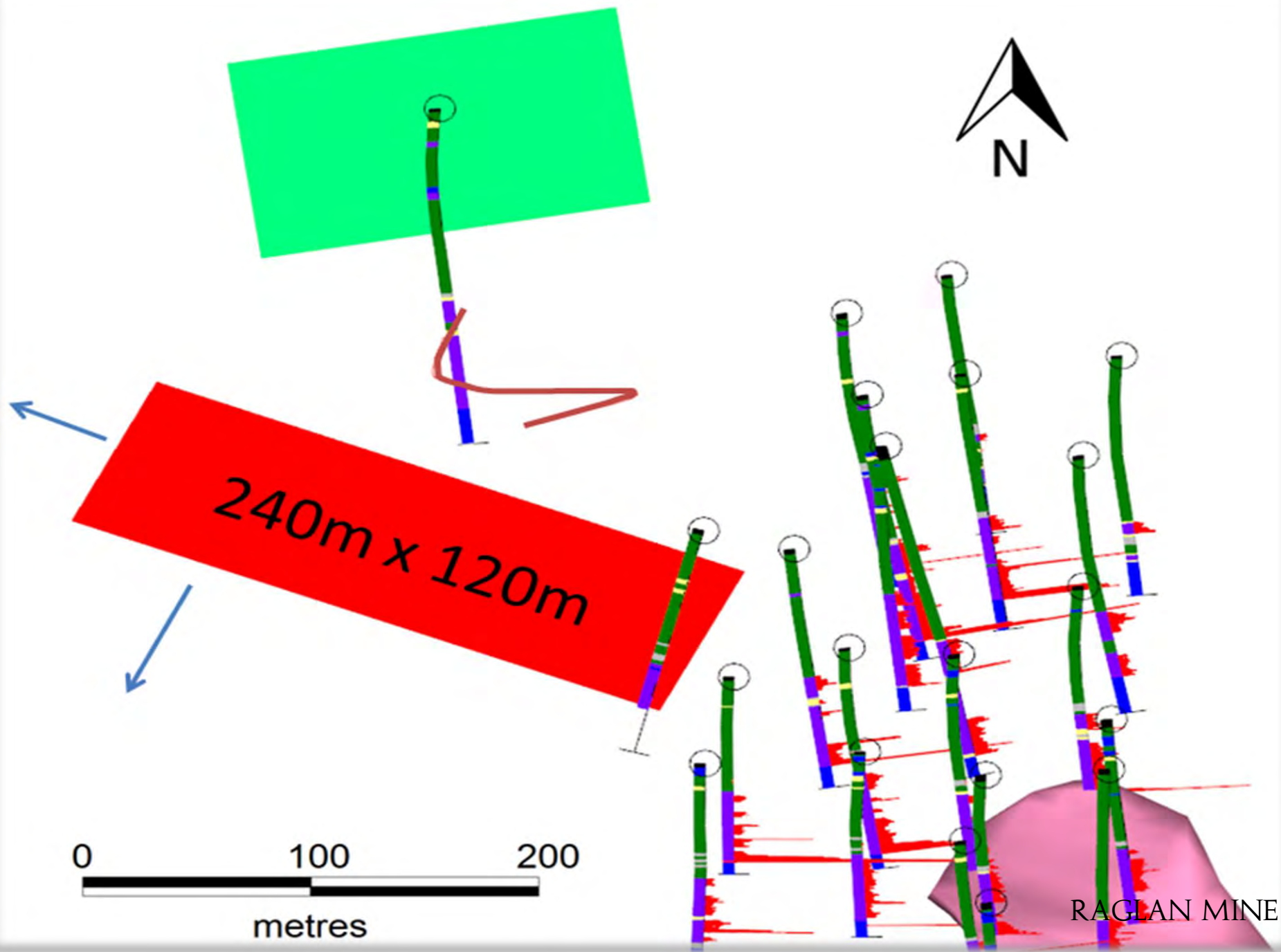


## SJ Geophysics Volterra

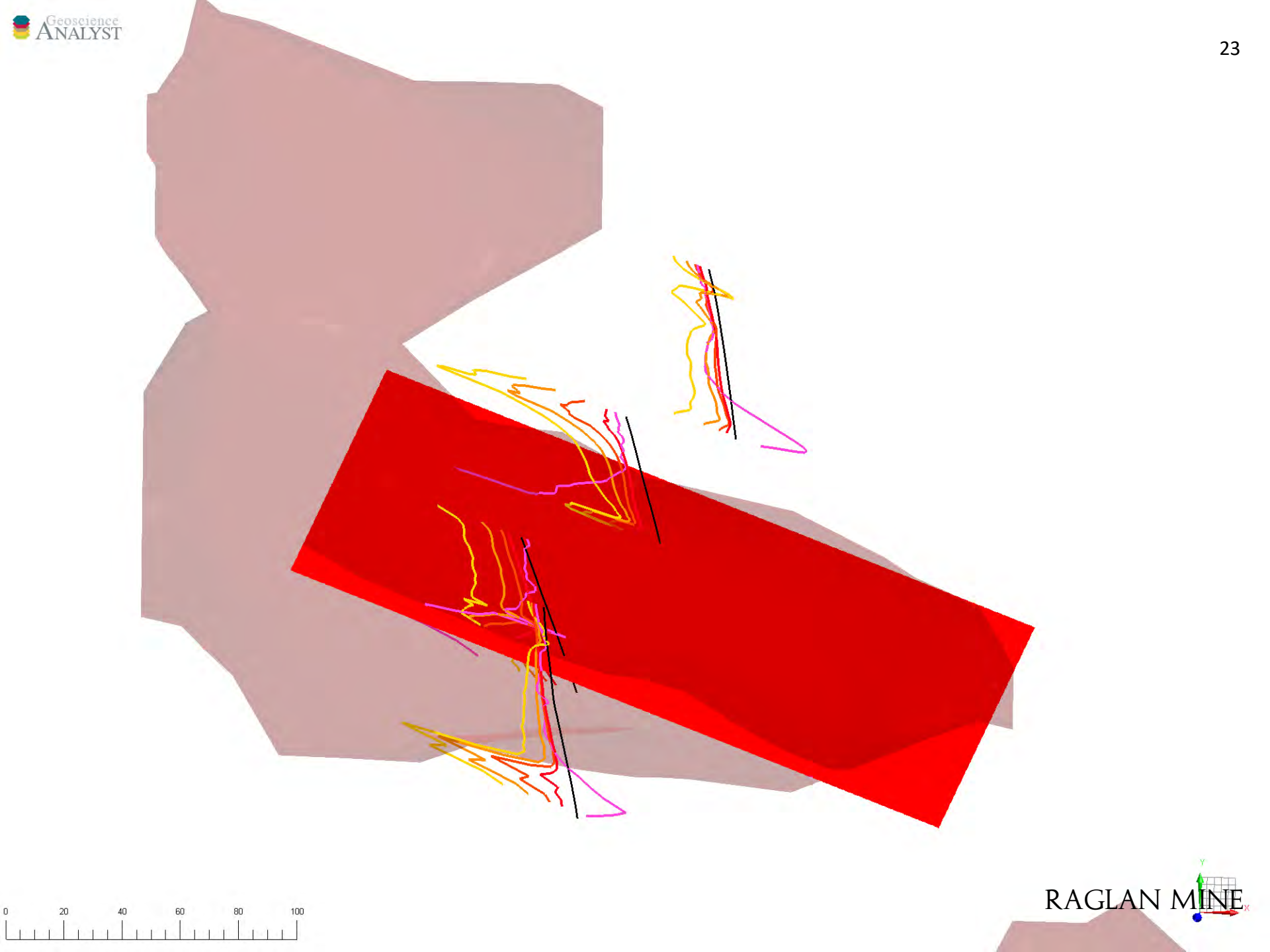


## Crone Fluxgate











# RAGLAN MINE

A GLENCORE COMPANY

Nakurmiik · Merci · Thank you

[mineraglan.ca](http://mineraglan.ca)